

How the Glass industry is addressing sustainability in 2023

Ginposium 2023

Nolan Kane
Verallia UK

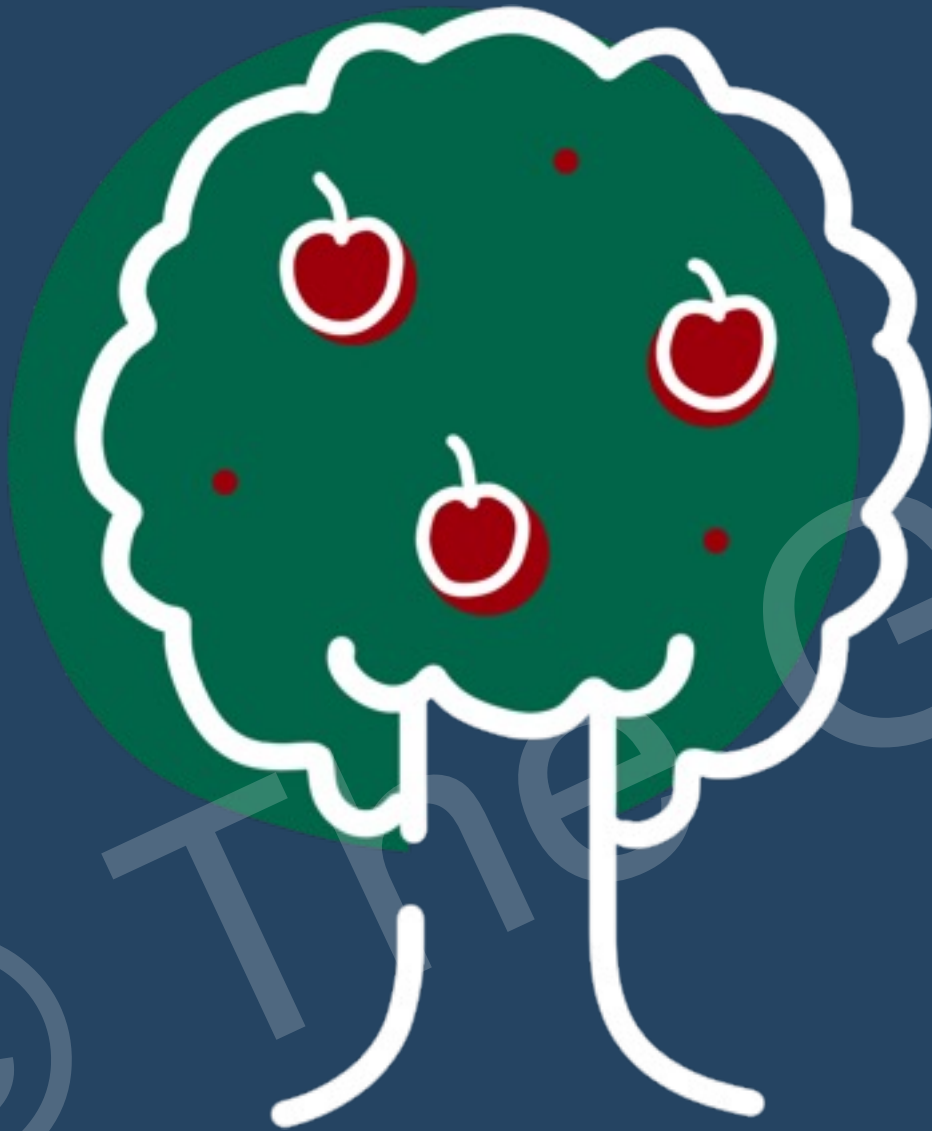
“re-imagine glass for a
sustainable future”





How sustainable is your bottle?





Top Tier

- New technologies
- Glass availability

Middle Ground

- Distance of manufacture
- Circular economy

Low hanging

- Eco design
- Recycled content
- Reduce, re-use



Premium
Flint

Low to no recycled glass



Standard
Flint

20% - 70% recycled glass



Coloured
Glass

0% - 95% recycled glass



Eco Design



Average weight of cork mouth gin bottle has dropped by 200g in the last 4 years.

- Less raw materials
- Energy efficiency
- Lighter for shipping
- Filling speeds

23% lighter

Recycled Content

“Every tonne of glass re-melted saves 580kg of carbon dioxide emissions.”

- British Glass



Recycled content energy savings

10% = 2.5% energy savings

30% = 7.5% energy savings

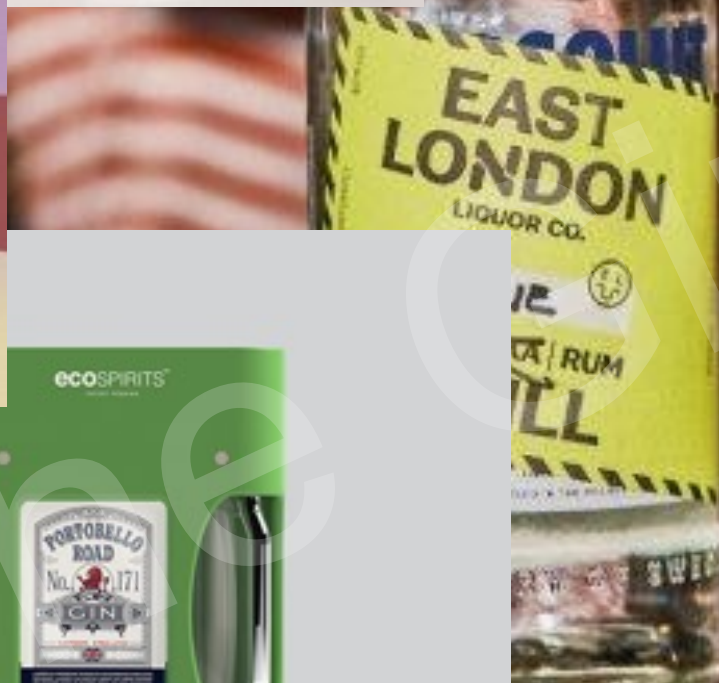
50% = 12.5% energy savings

70% = 17.5% energy savings

90% = 22.5% energy savings

03

Reduce/Re-use



Circular Economy

Extraction and transformation of raw materials (sand, limestone, soda ash)

Eco-design and production of quality glass packaging

Collection and awareness-raising of sorting and recycling

55.7% external cullet used in our production

Transformation of collected glass into cullet through the recovery of domestic glass in Verallia or partner processing plants

Packaging and marketing
Verallia adds value to customers' products and contributes to the well-being of the end consumers



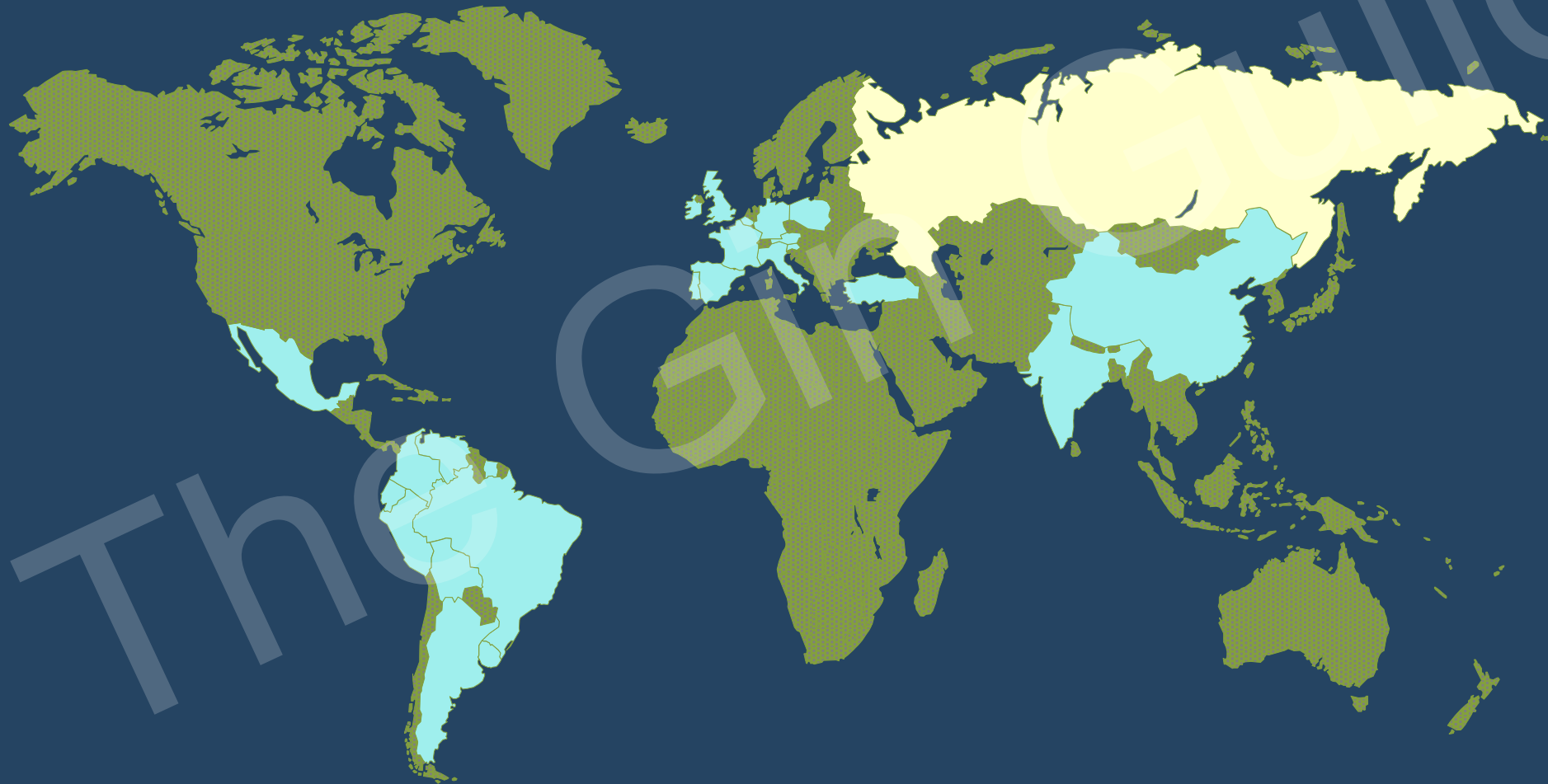


Gin 4% Guild



Distance of Manufacture

UK Glass Supply



Origin	KM's	Co2	KG
UK	431	319	0%
France	601	445	39.5%
Slovenia	1,764	1,306	309.4%
Italy	1,845	1,365	327.8%

Calculated via fleet world calculator based on full arctic loads using diesel

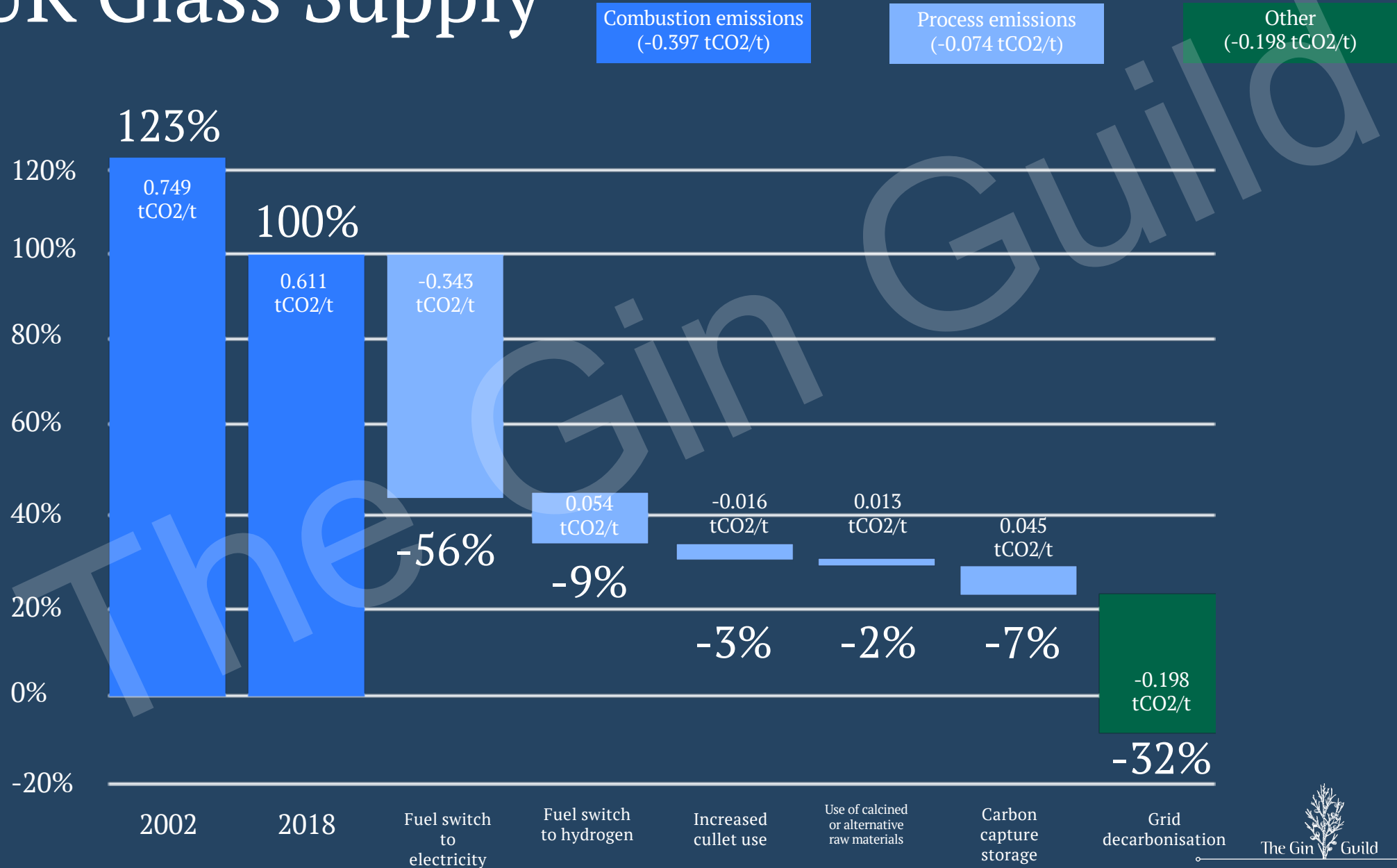




Gin 4%
The Gin Guild

New Technologies

UK Glass Supply



“Net-zero UK
emissions by 2050.”

- British Glass



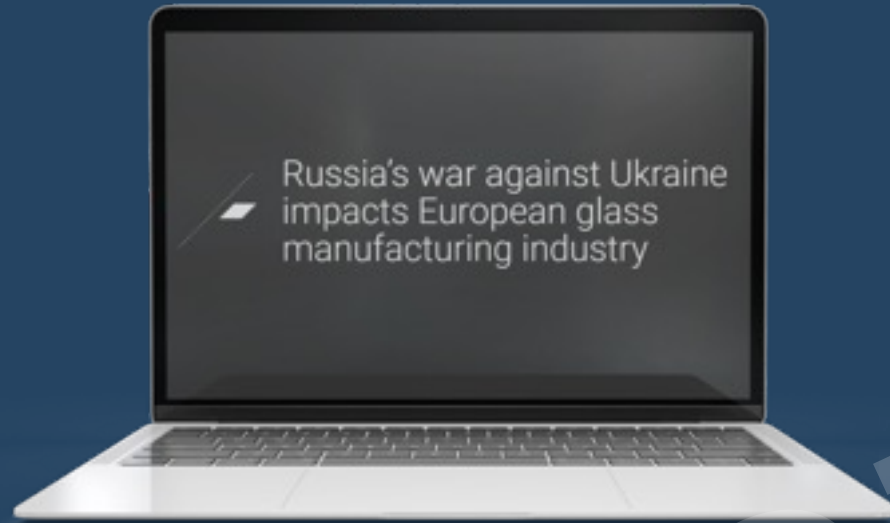
New Furnace Technology

- Gas/Electric
- Electric/Low carbon hydrogen

New Fuels

- Hydrogen
- Bio Fuels

Availability



The Future



- Weight limitations
- Removal of badging/external packaging
- Recycled content
- Re-usable bottles



The Gin & A Guild

Thanks for your time!

Nolan Kane

nolan.kane@verallia.co.uk

@verallia_uk www.veralia.co.uk

Connect on
LinkedIn



www.theginguild.com

www.gin-note.com

www.ginposium.com